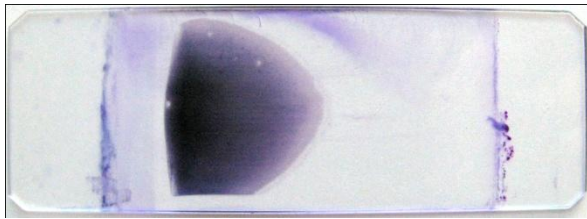


## Blood Smear Preparation Guidelines

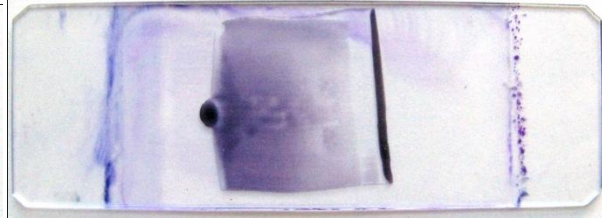
Quality blood smears:

- Have a feathered edge
- Extend 1/2 to 2/3 the length of the slide.
- Have a monolayer area where leukocytes, erythrocytes and platelets can be appropriately evaluated.

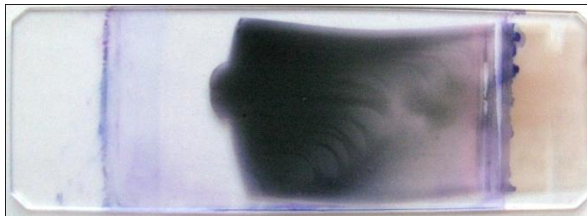
Blood smear examples:



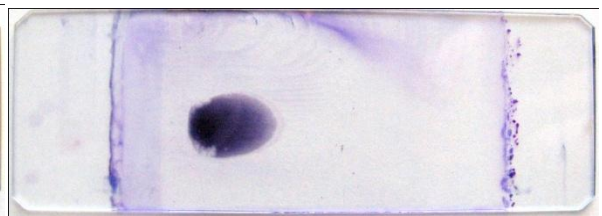
Good quality smear



Abrupt stop, no feathered edge



Too long, monolayer beyond staining area



Too short



Too thick, no feathered edge